

Crime - EFDC

Kim Stalabrass
West LPA Partnership Analyst

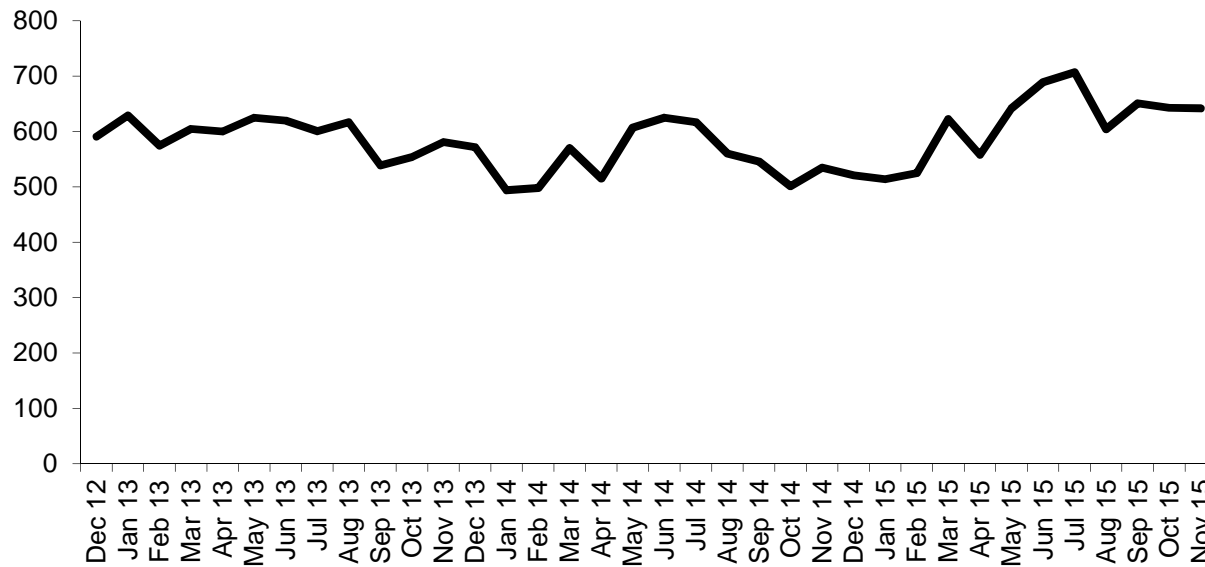
Figures for All Crime, Violence Against the Person & Burglary – Dwelling are taken from the Home Office system iQuanta.

Latest data set available is for offences recorded up to and including November 2015.

iQuanta provides data for a 3 year span.

Crime - EFDC

All Crime

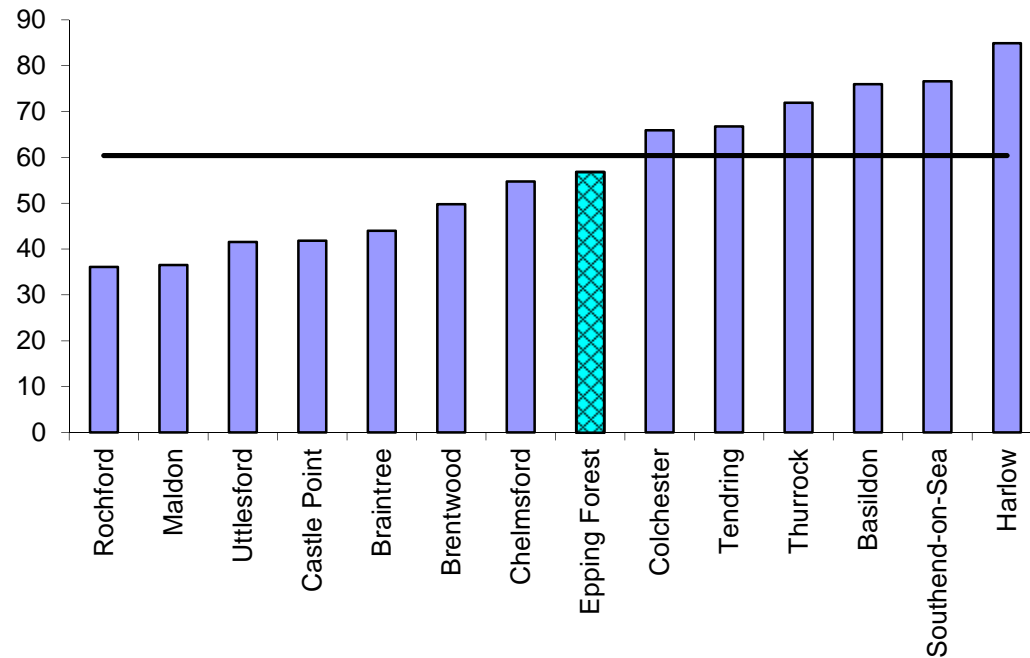


Up 14% (630 cases) in comparison to previous year to date.
4506 to 5136 cases

Month on month totals –
Dec 2012 591 cases compared with Nov 2015 642 cases. An increase of 7.9% 51 cases overall over 3 years.

Crime - EFDC

All Crime



Epping is 8th within Essex and 5.9% below the county average.

In real terms, Epping had 56.8 reported incidents against the county average of 60.4 per thousand residents.

Crime - EFDC

All Crime

All crime year to date per thousand residents.

Maidstone, Kent, (identified by ONS as a match to Epping in the Most Similar Group)

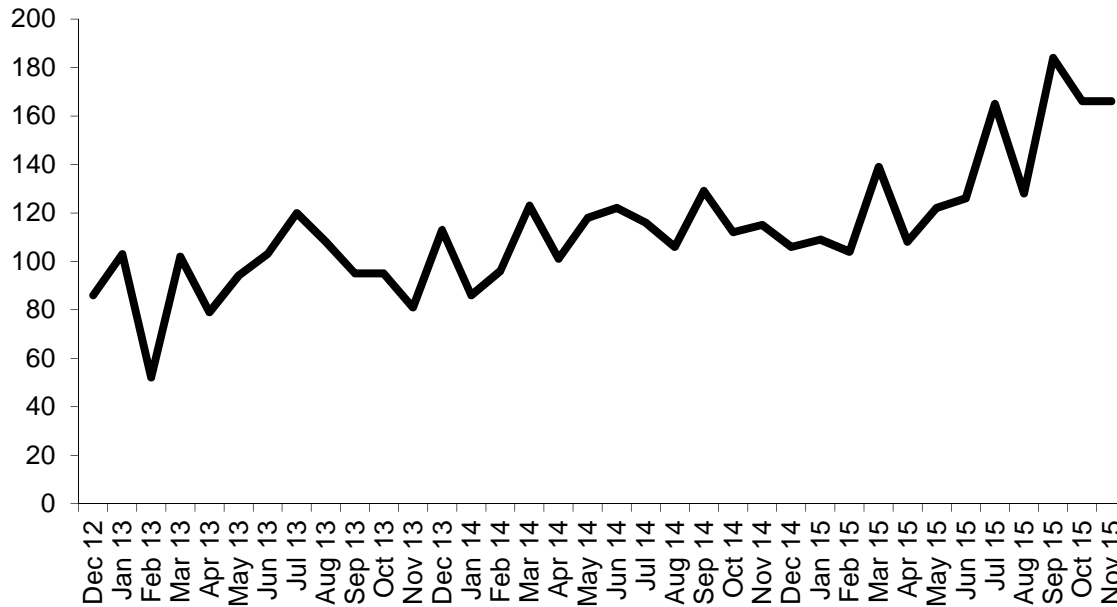
Broxbourne is a border council with similar proximity to London and transport link including M25

Watford similar tube and motorway links.

Watford	72.6 Crimes per thousand residents.
Broxbourne	62.3 Crimes per thousand residents.
Epping Forest	56.8 Crimes per thousand residents.
Maidstone	56.6 Crimes per thousand residents.

Crime - EFDC

Violence Against the Person

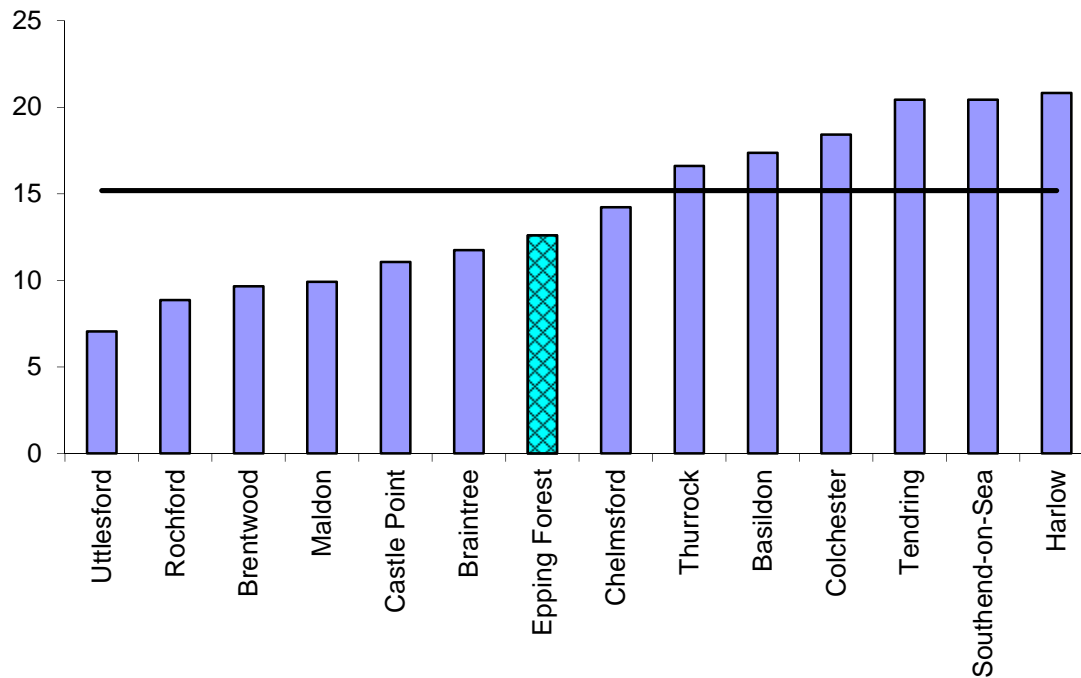


In Epping there has been a 27% (246) increase in comparison to previous year (919) to date (1165)

The Nov 2015 total is 50% higher than Dec 2012.

Crime - EFDC

Violence Against the Person



Epping is 17% below the Essex average of 15.2 per 1000 residents.

Harlow, a close neighbour had 20.8 incidents per 1000 residents.

Crime - EFDC

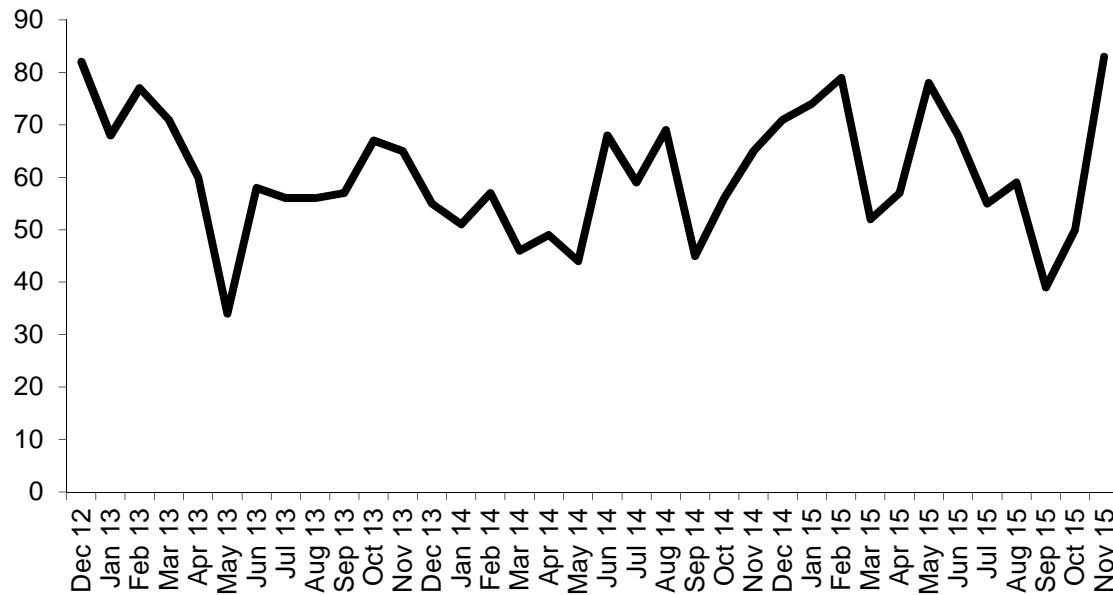
Violence Against the Person

In comparison, year ending November 2015 actual incidents –

Maidstone	2690
Watford	1704
Epping Forest	1690
Broxbourne	1449

Crime - EFDC

Burglary - Dwelling



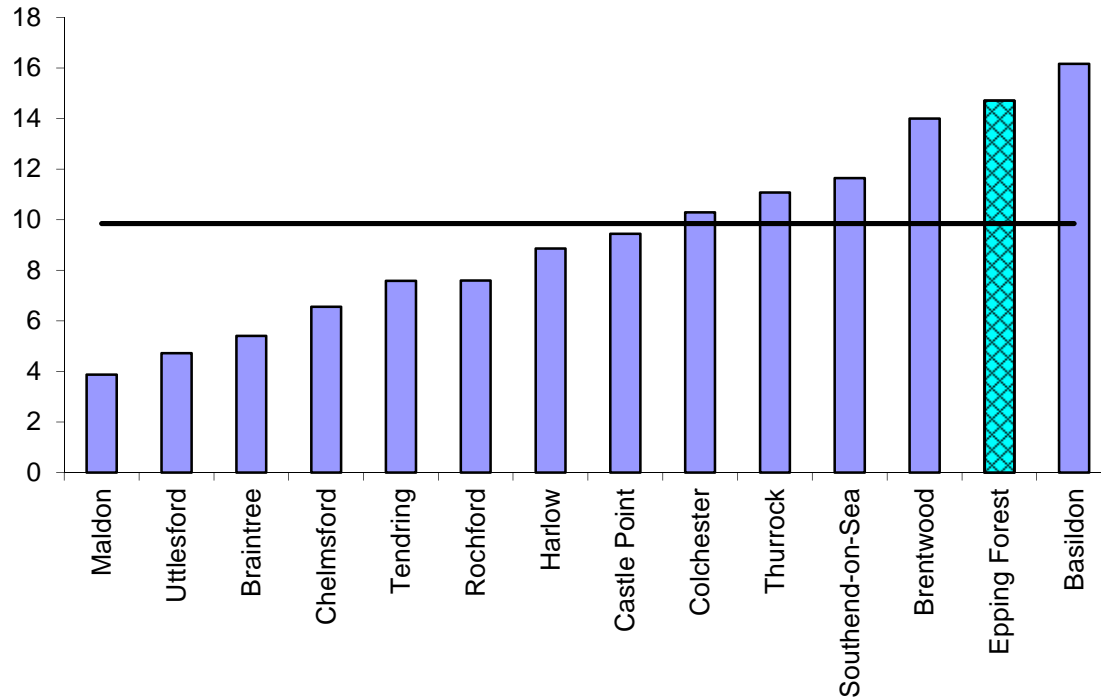
This offence is up 15% (101 incidents) in comparison to previous year to date.

November saw a monthly increase of 40% 33 cases compared to October.

Dec '12 82 burglaries
Nov '15 83 burglaries

Crime - EFDC

Burglary - Dwelling



Within the county, Epping is 33% above the Essex average per thousand residents.

However, whilst Epping is still above the Essex average this quarter has dropped from 52.6% above the average when compared to the previous quarter.

Crime - EFDC

Burglary - Dwelling

Using our own comparison council data, year to Nov 2015

Epping Forest	765
Maidstone	349
Broxbourne	331
Watford	230

Crime - EFDC

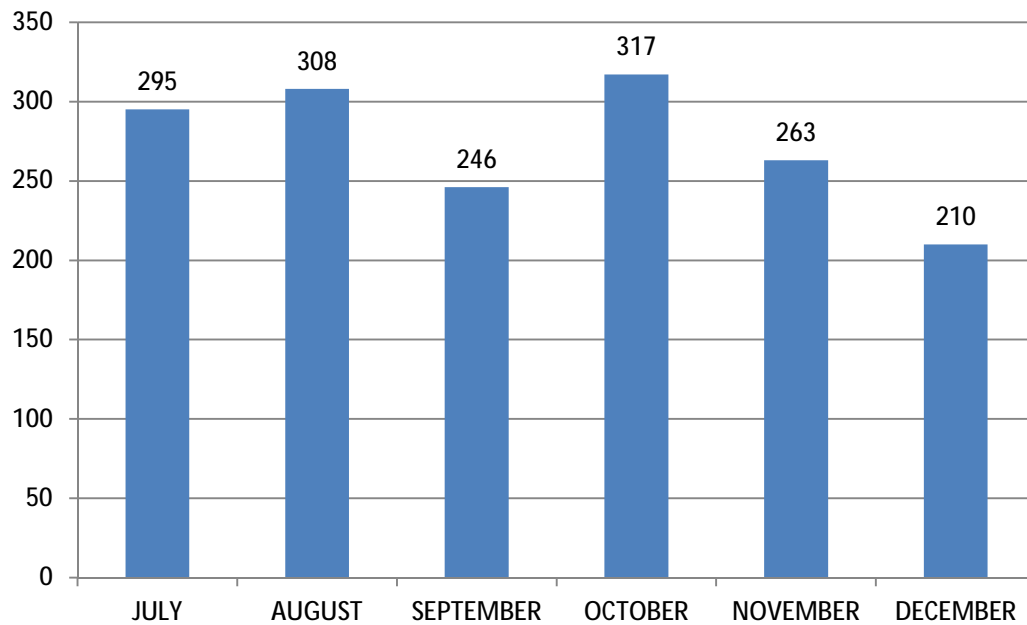
Anti Social Behaviour

Data is extracted from the Essex Police incident recording system called Storm. There is limited detail available about the incidents.

Crime figures

Anti Social Behaviour EFDC

ASB incidents by month

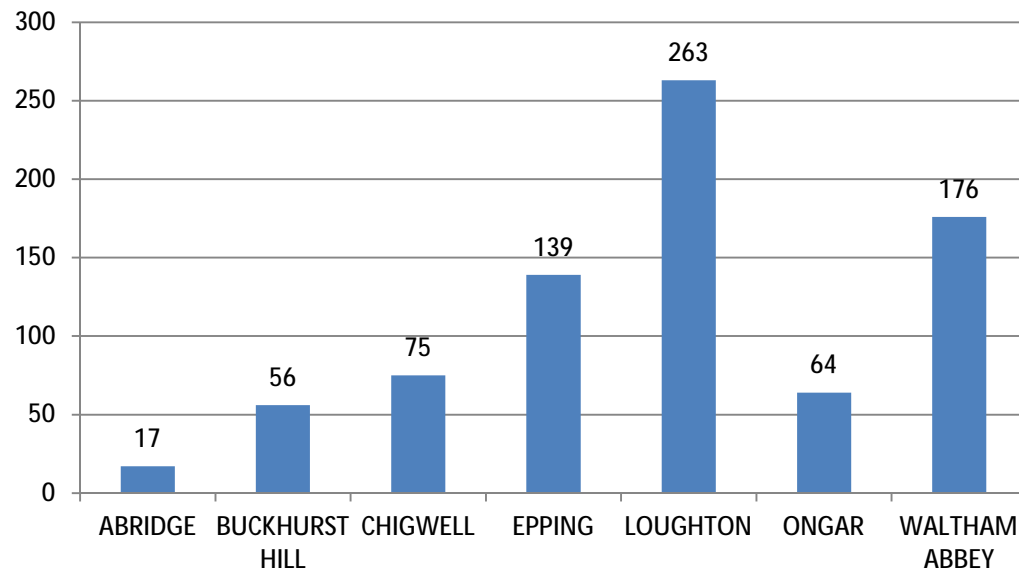


Following a peak in October ASB incidents have fallen by a third in December compared to October.

Crime figures

Anti Social Behaviour EFDC

ASB incidents by locality
October - December



Loughton remains the locality with highest ASB incidents (263), followed by Waltham Abbey (176) & Epping (139).

Loughton is 33% higher than Waltham Abbey.

Crime figures

Anti Social Behaviour EFDC

DISTURBANCE	156
NUISANCE -YOUTH	112
NUISANCE-VEHICLE	84
ABANDONED VEHICLE	64
NUISANCE-OTHER	52
NUISANCE NEIGHBOUR	51
INFORMATION	35
SUSPICIOUS CIRCUMSTANCES	31
FIREWORKS	29
OBSTRUCTION	23
REQUIRE POLICE	16
DRUGS	13
NUISANCE COMMUNICATIONS	13
DISPUTE - CIVIL	11
CONCERN	10

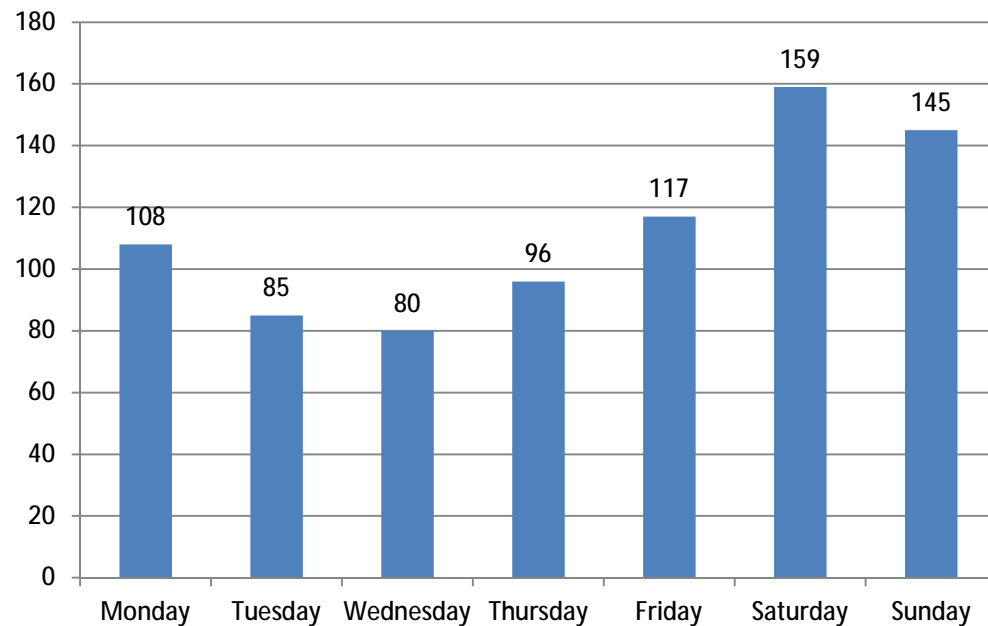
In the last quarter these are the top 15 types of ASB calls received by Essex Police.

Types with less than 10 incidents have been removed.

Crime - EFDC

Anti Social Behaviour EFDC

All ASB incidents by day of week

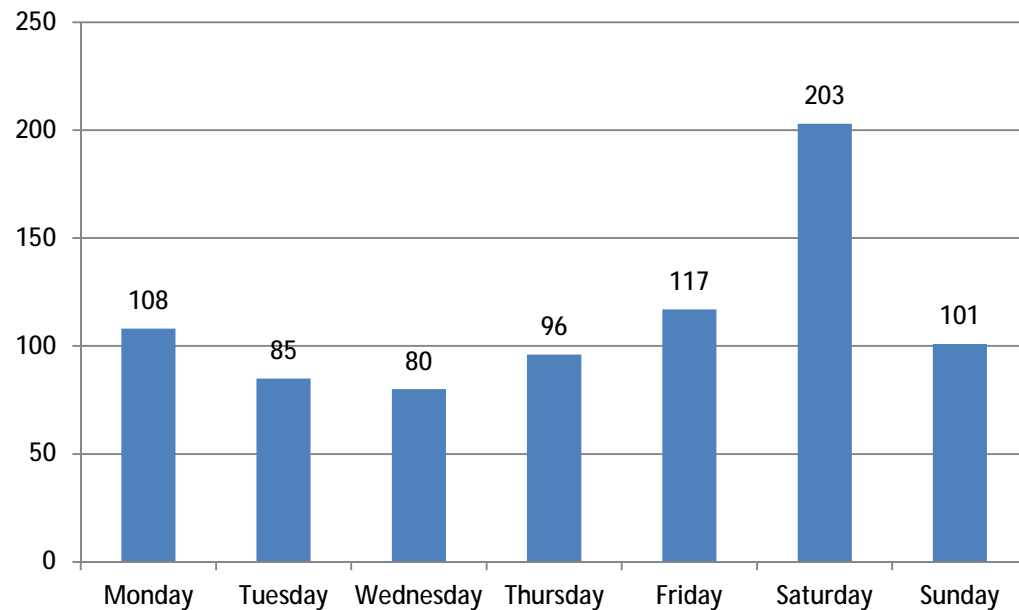


Across EFDC ASB incidents totals particularly dip Tuesday-Wednesday which are approx. half the Saturday total.

Crime - EFDC

Anti Social Behaviour EFDC

Incidents by day of week - amended

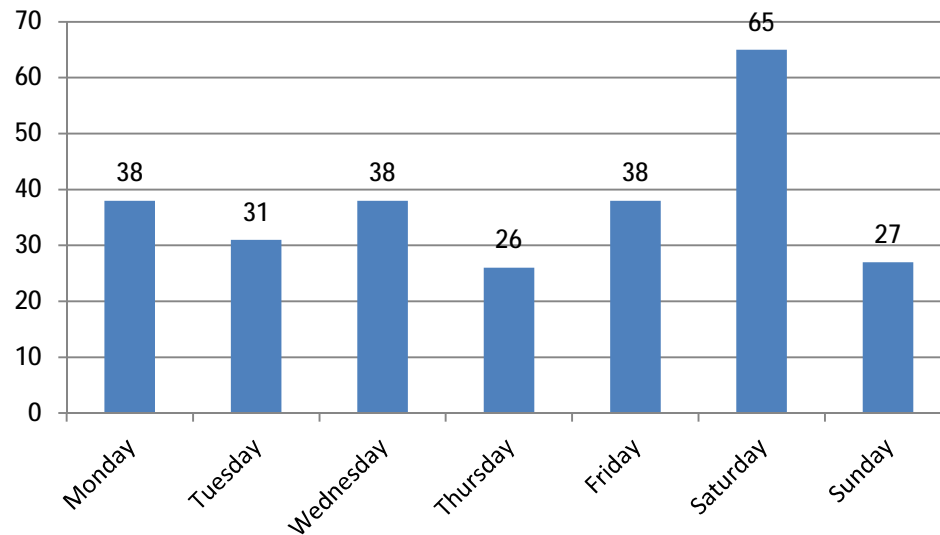


If taking incidents reported 00:00 – 03:59 on Sunday as Saturday NTE related incidents and adding them to Saturday totals there is a rise in Saturday incidents from 159 to 203.

Crime - EFDC

Anti Social Behaviour Loughton

ASB incidents by amended day of week



However, figures for Loughton (highest ASB area) where Luxe and Nu bar are located, show a significant increase for Saturday following a fairly consistent Sunday – Friday pattern.

This is using data where incidents 00.00-03.59 Sunday are attributed to Saturday.

Crime - EFDC

Anti Social Behaviour Loughton

DISTURBANCE	62
NUISANCE-YOUTH	48
ABANDONED VEHICLE	19
NUISANCE-VEHICLE	18
FIREWORKS	17
NUISANCE-OTHER	15
NUISANCE NEIGHBOUR	14
INFORMATION	11
SUSPICIOUS CIRCUMSTANCES	9
OBSTRUCTION	7

The highest categories of ASB for Loughton area (highest EFDC ASB area) are

Disturbance - 40% of district total (156)
Nuisance Youth - 43% of district total (112)
Abandoned Veh – 30% of district total (64)
Nuisance Vehicle 21% of district total (84)

Crime - EFDC

Domestic Violence

This data is taken from the Essex Police data system Athena and is from Oct – Dec 2015.

Crime - EFDC

Domestic Violence

<u>Month</u>	<u>Count</u>
October	146
November	145
December	178
<u>Grand Total</u>	469

October and November remained level but December saw a 22.7% (33) rise.

In the previous quarter the monthly average was 150.

Crime - EFDC

Domestic Violence

<u>Ward</u>	<u>Count</u>
Waltham Abbey South	41
Chigwell	34
Loughton Broadway	29
Epping Lindsey & Thornwood Common	26
Loughton Fairmead	24
Loughton St John	24
Waltham Abbey Honey Lane	23

The top 7 wards for Domestic Violence

Crime - EFDC

Domestic Violence

<u>Risk level</u>	<u>Count</u>
Medium	254
Standard	140
High	68
(blank)	7
<u>Grand Total</u>	<u>462</u>

Medium risk assessed incidents form 55% of DV incidents in EFDC.

Within a 5% tolerance medium risk DV comprises 50% of all DV for Harlow, Brentwood and Thurrock

Crime - EFDC

Domestic Violence

Day of Week	Count
Monday	72
Tuesday	72
Wednesday	56
Thursday	61
Friday	62
Saturday	74
Sunday	72

Domestic violence remains more prevalent in the Saturday – Tuesday window. However, there is just a 27% variance across all days of the week.

Crime - EFDC

Kim Stalabross